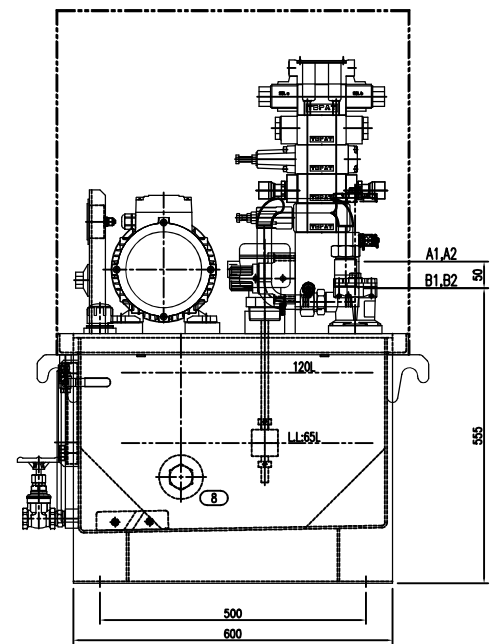
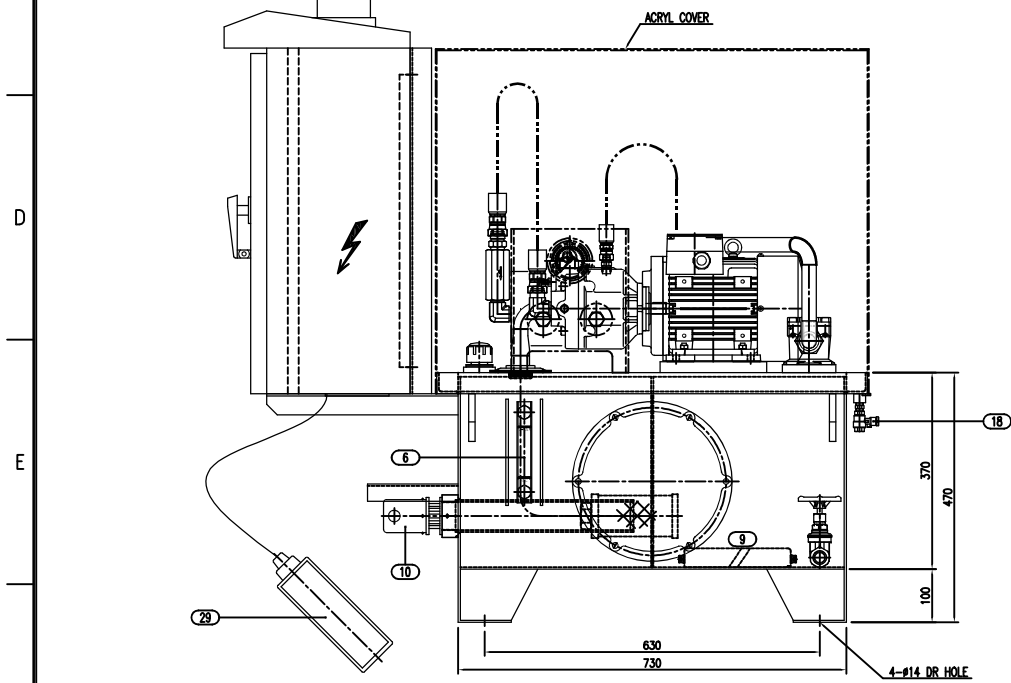
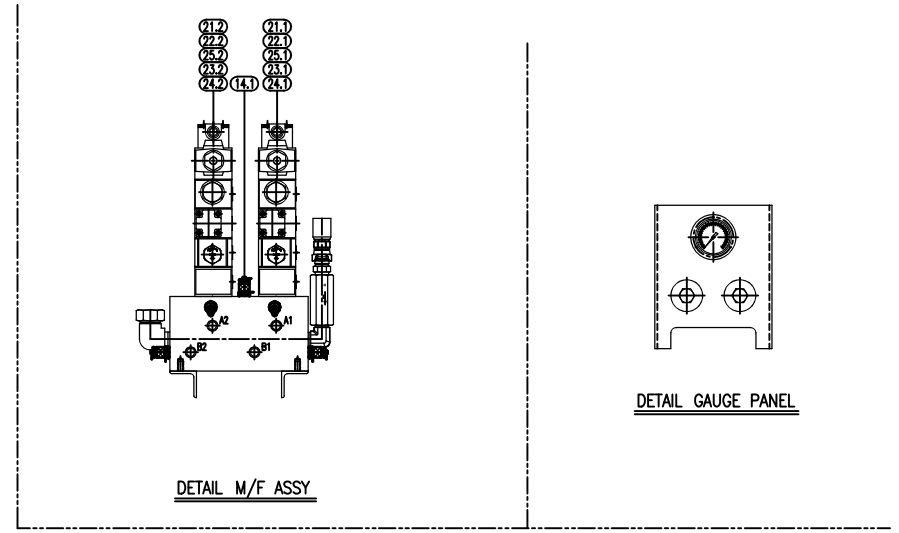
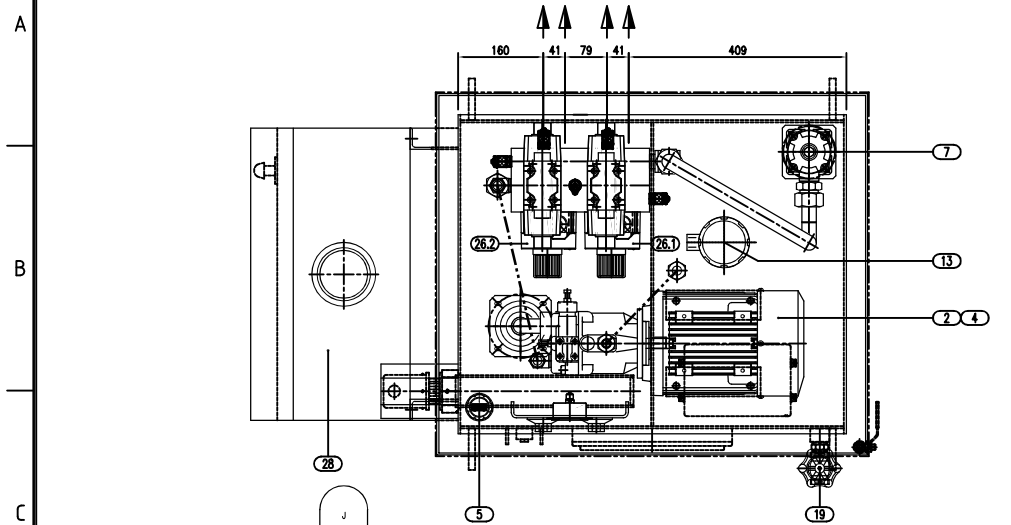


1	2	3	4	5	6	7	8
지시액 총괄지수	지시액 모사리부분	지시액 모사리부분	지시액 모사리부분	지시액 모사리부분	지시액 모사리부분	지시액 모사리부분	지시액 모사리부분
구	0.5	6	30	120	315	1000	
분	6	30	120	315	1000	2000	
단	±0.1	±0.2	±0.3	±0.5	±0.8	±1.2	
표	▽	▽	▽	▽	▽	▽	▽

표면 거칠기							
Ra	12.5	6.3	3.2	1.6	0.8	0.4	0.2
Rmax	1005	505	255	1255	6.35	3.25	0.85
다듬임	▽	▽	▽	▽	▽	▽	▽

NO.	NAME OF PARTS	SPECIFICATION	MAKER	QTY	REMARKS
-	-	-	-	-	-
-	-	-	-	-	-



DETAIL OF PORT FITTING				
MARK	SIZE	STANDARD	MATERIALS	REMARKS
A1	Rc1/2	-	C. STEEL	.
B1	Rc1/2	-	C. STEEL	.
A2	Rc1/2	-	C. STEEL	.
B2	Rc1/2	-	C. STEEL	.

SLUDGE CAKE HOPPER UNIT ASSY SPEC	
TOTAL WEIGHT	200 Kg

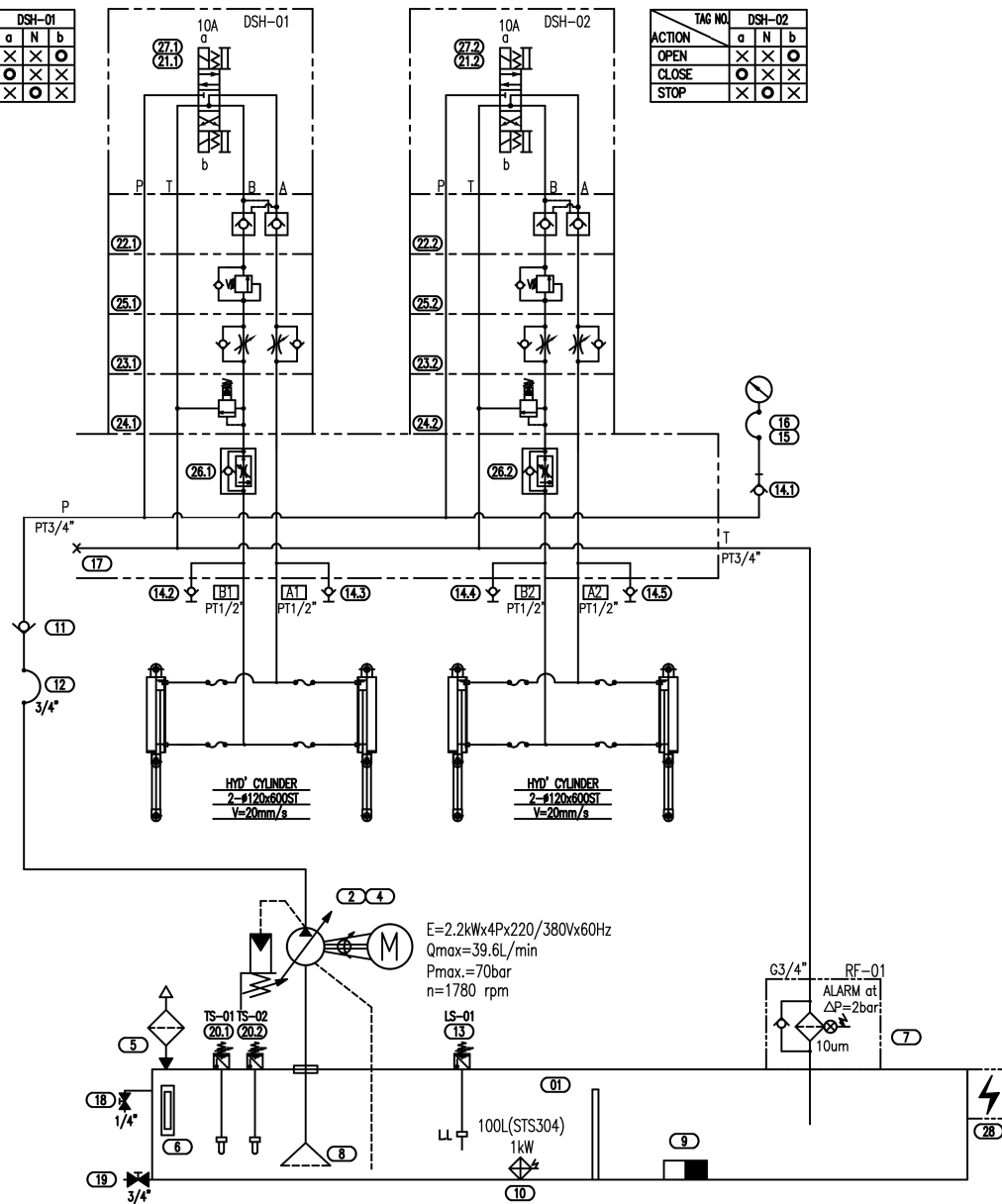
- SPECIFICATION -
- TANK VOLUM : 100LT
 - FLOW : 39.6L/min
 - PRESSURE: WORKING PRESSURE= 70 Bar
 - HYDRAULIC FLUID MEDIUM : MINERAL OIL ISO VG 46cSt
 - VISCOSITY : ISO VG 46 cSt at 40°C
 - ELECTRIC SOURCE: ELEC. POWER: 2.2kw,220/380VAC/60Hz,1780rpm
: SOLENOID VALVE - AC110V
 - PIPING MATERIAL : STS304

NO.	NAME OF PARTS	SPECIFICATION	MAKER	QTY	REMARKS
TITLE: SLUDGE CAKE HOPPER 유압장치 HYD' UNIT - ASSEMBLY					
FOR APPROVAL		Y.Y.R	-	-	-
NO.	DATE	REVISION & DESCRIPTION	DRAWN	CHECKED	REVIEWED
SCHITEC					
DESIGN	24.12.08	PROJECTION METHOD	THIRD ANGLE	SCALE	1/5
CHKD	24.12.08	MATERIAL	JOB NO.		
CHKD	24.12.08	CLIENT DOC. NO.	DWG NO.	SGT-2412-01-HPU	

1		2		3		4		5		6		7		8	
지사의 용량비수	지사의 모서리부호	지사의 직경	지사의 두께	구	0.5	6	30	120	315	1000					
	지사의 길이	지사의 무게	지사의 부피	지사의 표면적	12.5	63	320	1280	3200						
	C = 0.3-1.2				1005	505	255	1285	635	325	0.85	0.45			
	R = 0.3-1.2				대형	~	▽	▽▽	▽▽▽	▽▽▽▽					

TAG NO.	DSH-01
ACTION	a N b
OPEN	○ × × ○
CLOSE	○ × × ×
STOP	× ○ × ×

TAG NO.	DSH-02
ACTION	a N b
OPEN	○ × × ○
CLOSE	○ × × ×
STOP	× ○ × ×



NO.	NAME OF PARTS	SPECIFICATION	MAKER	QTY	REMARKS
1	TANK	100L (STS304)	SGHITEC	1	
2	PISTON PUMP	AR22-FR01C-22	YUKEN	1	
3	BLANK				
4	ELECTRIC MOTOR	YM-3-G2A-19-2360-T-21	IK	1	
5	AIR BREATHER	SH-AB-1380	SHC	1	
6	LEVEL GAUGE	SH-C-150-M18	SHC	1	
7	RETURN FILTER	RF ON 110 D C 10 B1.X	HYDAC	1	
8	SUCTION ELEMENT	SH-SE-08(PT 1")	SHC	1	
9	MAGNET	MP-100	K.S	1	
10	ELEC.HEATER	1kW x 380V	K.S	1	
11	CHECK VALVE	CT-06-05-30	YUKEN	1	
12	HYD' HOSE	3/4" x 140bar	K.S	1	
13	LEVEL SWITCH	LL LEVEL (1SP)	K.S	1	
14	TEST POINT	PT1/4"	K.S	5	
15	TEST HOSE	M16x2P-1500L	K.S	1	
16	PRESSURE GAUGE	63-BD-250(PT1/4)	YUKEN KOREA	1	
17	MANIFOLD BLOCK	SPECIAL	Y.K.R	1	
18	BALL VALVE	1/4" x 10K	K.S	1	
19	GATE VALVE	3/4" x 10K	K.S	1	
20	THERMOSTAT	0-110°C	EGO	2	
21	SOL. VALVE	DSG-03-3C4-A100-50	YUKEN	2	
22	PILOT CHECK VALVE	MPW-03-2-70	YUKEN	2	
23	THROTTLE CHECK VALVE	MSW-03-Y-70	YUKEN	2	
24	RELIEF VALVE	MBB-03-C-70	YUKEN	2	
25	COUNTER BALANCE VALVE	MHB-03-B-2010	YUKEN	2	
26	FLOW CONTROL VALVE	FCG-02-30-30	YUKEN	2	
27	BOLT KIT	MBK-03-04-10	YUKEN	2	
28	CONTROL PANEL	SPECIAL (STS304)	SGHITEC	1	
29	REMOTE SWITCH	SPECIAL	SGHITEC	1	

NO.		NAME OF PARTS		SPECIFICATION		MAKER		QTY		REMARKS	
TITLE: SLUDGE CAKE HOPPER 유압장치 HYD' UNIT - CIRCUIT DIAGRAM											
FOR APPROVAL				DESIGN TEAM				PROJECTION METHOD		THIRD ANGLE PROJECTION	
NO.	DATE	REVISION & DESCRIPTION	DRAWN	CHECKED	REVIEWED	APPROVED	DRWING	INFORM.	JOB NO.	SCALE	1/3
SGHITEC								CLIENT DOC. NO.		DWG NO. SGT-2412-01-HPU	