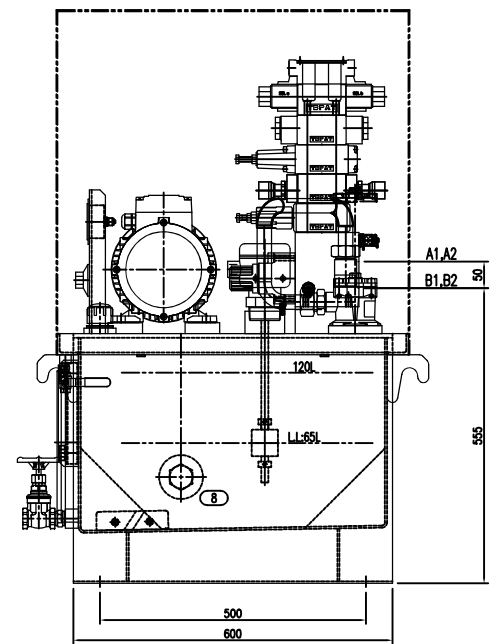
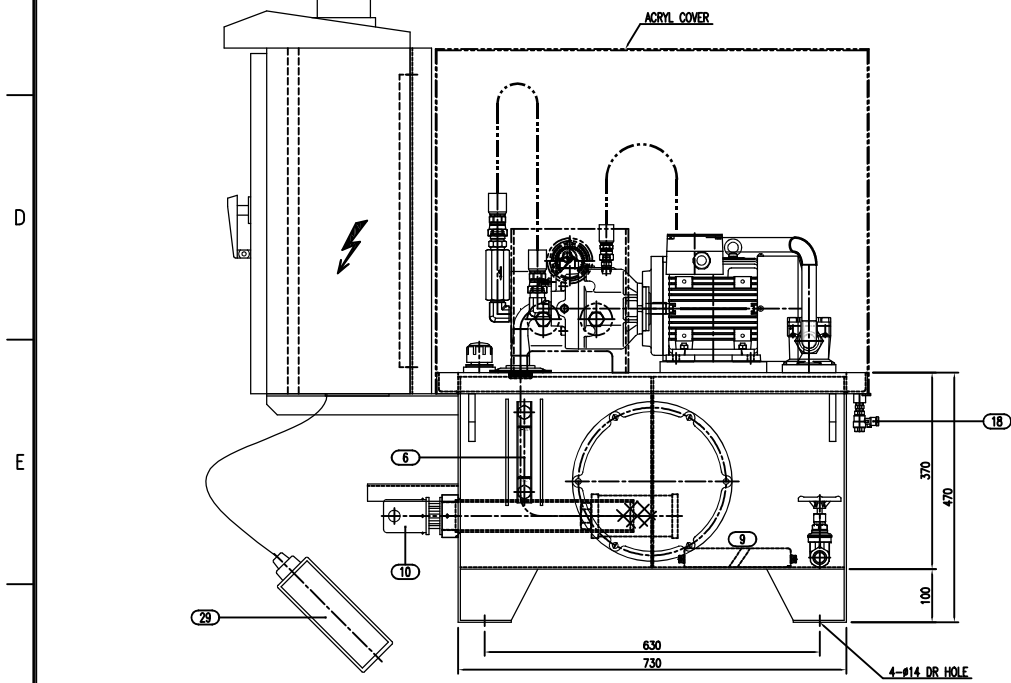
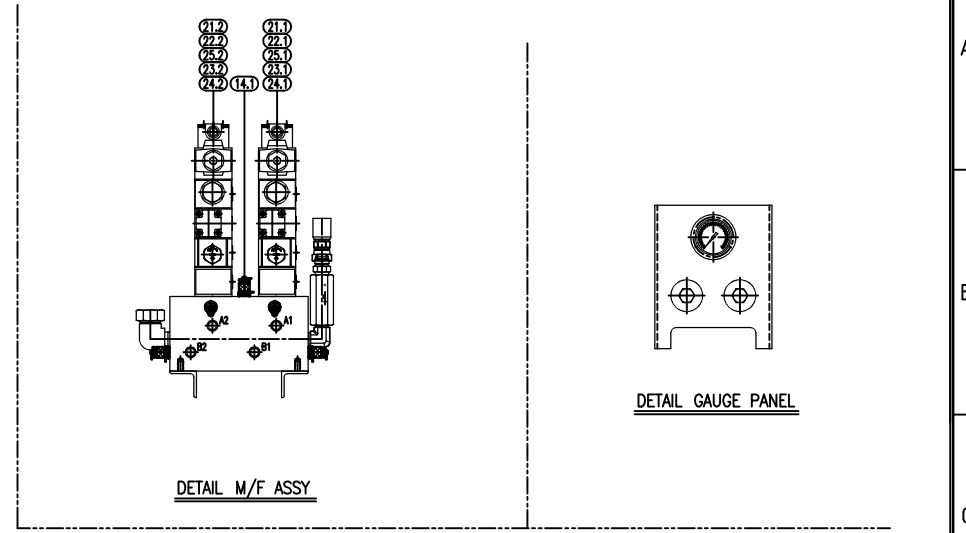
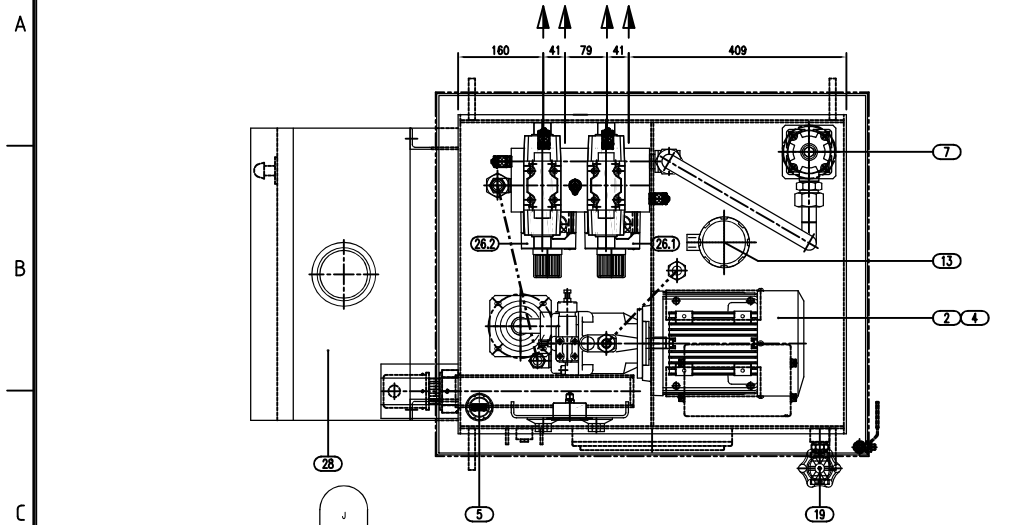


1	2	3	4	5	6	7	8
지시액 총괄지수	지시액 모사리부분	지시액 모사리부분	지시액 모사리부분	지시액 모사리부분	지시액 모사리부분	지시액 모사리부분	지시액 모사리부분
구	0.5	6	30	120	315	1000	
분	6	30	120	315	1000	2000	
초	30.1	30.2	30.3	30.5	30.8	31.2	
다	1005	505	295	12.95	6.35	3.25	0.85
다	12.5	6.3	3.2	1.6	0.8	0.4	
다	1005	505	295	12.95	6.35	3.25	0.85
다	12.5	6.3	3.2	1.6	0.8	0.4	

NO.	NAME OF PARTS	SPECIFICATION	MAKER	QTY	REMARKS
-	-	-	-	-	-
-	-	-	-	-	-



DETAIL OF PORT FITTING				
MARK	SIZE	STANDARD	MATERIALS	REMARKS
A1	Rc1/2	-	C. STEEL	.
B1	Rc1/2	-	C. STEEL	.
A2	Rc1/2	-	C. STEEL	.
B2	Rc1/2	-	C. STEEL	.

SLUDGE CAKE HOPPER UNIT ASSY' SPEC	
TOTAL WEIGHT	200 Kg

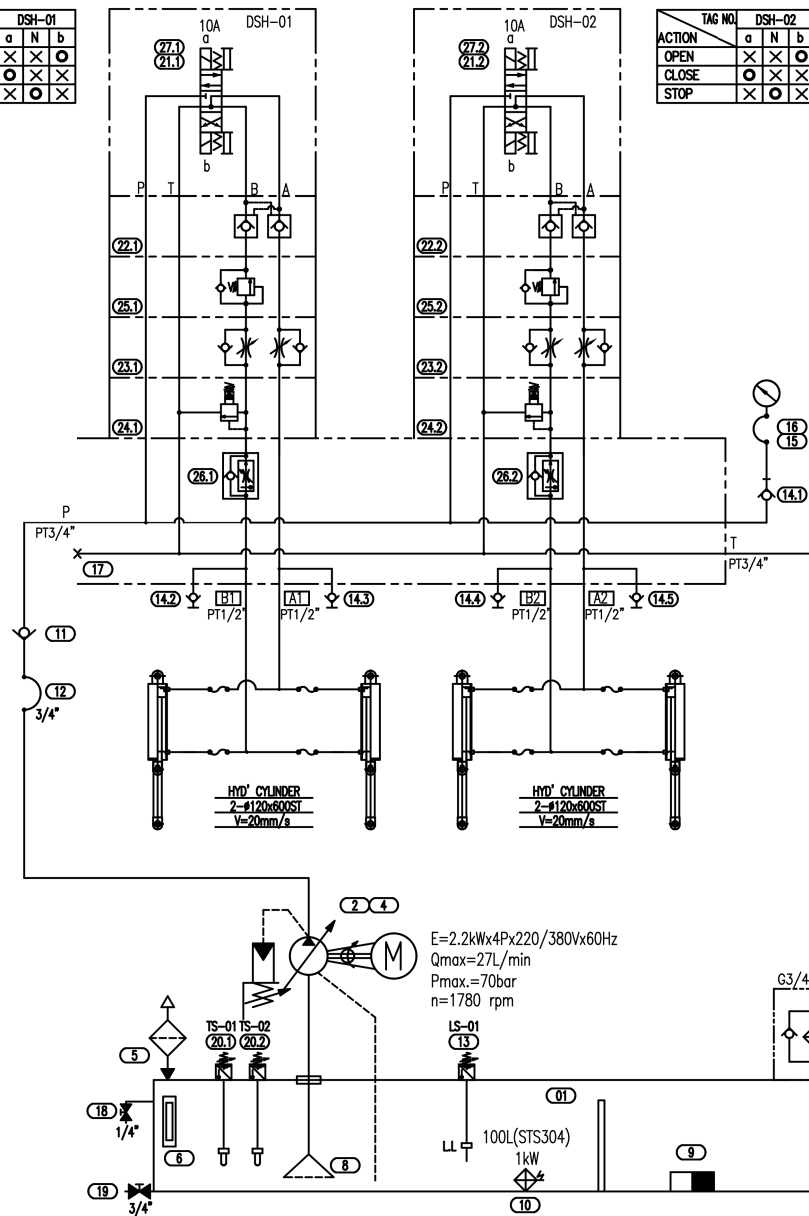
- SPECIFICATION -
- PRESSURE : WORKING PRESSURE= 70 Bar
 - HYDRAULIC FLUID MEDIUM : MINERAL OIL ISO VG 46cSt
 - VISCOSITY : ISO VG 46 cSt at 40°C
 - ELECTRIC SOURCE : ELEC. POWER - 220/380VAC / 60Hz
: SOLENOID VALVE - AC110V
 - PIPING MATERIAL : STS304

NO.		NAME OF PARTS		SPECIFICATION		MAKER		QTY		REMARKS	
TITLE: SLUDGE CAKE HOPPER 유입장치(금입상관호) 오수처리											
HYD' UNIT - ASSEMBLY											
FOR APPROVAL				Y.A.R		-		-		-	
NO.	DATE	REVISION & DESCRIPTION	DRAWN	CHECKED	REVIEWED	APPROVED	DESIGN TEAM	PROJECTION METHOD	THIRD ANGLE PROJECTION	SCALE	1/5
SCHITEC							24.12.08				
							24.12.08				
							24.12.08				
							CLIENT DOC. NO.	DWG NO.		SGT-2412-01-HPU	

1		2		3		4		5		6		7		8	
지시회로용량	지시회로모사비율	지시회로용량	지시회로모사비율	지시회로용량	지시회로모사비율	지시회로용량	지시회로모사비율	지시회로용량	지시회로모사비율	지시회로용량	지시회로모사비율	지시회로용량	지시회로모사비율	지시회로용량	지시회로모사비율
0.5	0.5	0.5	0.5	0.5	0.5	0.5	0.5	0.5	0.5	0.5	0.5	0.5	0.5	0.5	0.5
12.5	12.5	12.5	12.5	12.5	12.5	12.5	12.5	12.5	12.5	12.5	12.5	12.5	12.5	12.5	12.5
0.3	0.3	0.3	0.3	0.3	0.3	0.3	0.3	0.3	0.3	0.3	0.3	0.3	0.3	0.3	0.3
0.1	0.1	0.1	0.1	0.1	0.1	0.1	0.1	0.1	0.1	0.1	0.1	0.1	0.1	0.1	0.1

TAG NO.		DSH-01	
ACTION	a	N	b
OPEN	×	×	○
CLOSE	○	×	×
STOP	×	○	×

TAG NO.		DSH-02	
ACTION	a	N	b
OPEN	×	×	○
CLOSE	○	×	×
STOP	×	○	×



REFERENCE

NO.	NAME OF PARTS	SPECIFICATION	MAKER	QTY	REMARKS
1	TANK	100L (STS304)	SGHITEC	1	
2	PISTON PUMP	AR22-FR01C-22	YUKEN	1	
3	BLANK				
4	ELECTRIC MOTOR	YM-3-G2A-19-2360-T-21	IK	1	
5	AIR BREATHER	SH-AB-1380	SHC	1	
6	LEVEL GAUGE	SH-C-150-M18	SHC	1	
7	RETURN FILTER	RF ON 110 D C 10 B1.X	HYDAC	1	
8	SUCTION ELEMENT	SH-SE-08(PT 1")	SHC	1	
9	MAGNET	MP-100	K.S	1	
10	ELEC.HEATER	1KW x 380V	K.S	1	
11	CHECK VALVE	CT-06-05-30	YUKEN	1	
12	HYD HOSE	3/4"x140bar	K.S	1	
13	LEVEL SWITCH	LL LEVEL (1SP)	K.S	1	
14	TEST POINT	PT1/4"	K.S	5	
15	TEST HOSE	M16x2P-1500L	K.S	1	
16	PRESSURE GAUGE	63-BD-250(PT1/4)	YUKEN KOREA	1	
17	MANIFOLD BLOCK	SPECIAL	Y.K.R	1	
18	BALL VALVE	1/4" x 10K	K.S	1	
19	GATE VALVE	3/4" x 10K	K.S	1	
20	THERMOSTAT	0-110°C	EGO	2	
21	SOL. VALVE	DSG-03-3C4-A100-50	YUKEN	2	
22	PILOT CHECK VALVE	MPW-03-2-70	YUKEN	2	
23	THROTTLE CHECK VALVE	MSW-03-Y-70	YUKEN	2	
24	RELIEF VALVE	MBB-03-C-70	YUKEN	2	
25	COUNTER BALANCE VALVE	MHB-03-B-2010	YUKEN	2	
26	FLOW CONTROL VALVE	FCG-02-30-30	YUKEN	2	
27	BOLT KIT	MBK-03-04-10	YUKEN	2	
28	CONTROL PANEL	SPECIAL (STS304)	SGHITEC	1	
29	REMOTE SWITCH	SPECIAL	SGHITEC	1	

- SPECIFICATION —
- PRESSURE : WORKING PRESSURE= 70 Bar
 - HYDRAULIC FLUID MEDIUM : MINERAL OIL ISO VG 46cSt
 - VISCOSITY : ISO VG 46 cSt at 40°C
 - ELECTRIC SOURCE : ELEC. POWER - 220/380VAC / 60Hz
: SOLENOID VALVE - AC110V
 - PIPING MATERIAL : STS304

NO.		NAME OF PARTS		SPECIFICATION		MAKER		QTY		REMARKS	
TITLE: SLUDGE CAKE HOPPER 유압장치(급탕/급호) 오수처리 HYD' UNIT - CIRCUIT DIAGRAM											
FOR APPROVAL				DESIGN TEAM				PROJECTION METHOD			
NO.		DATE		REVISION & DESCRIPTION		DRAWN		CHECKED		REVIEWED	
SGHITEC						CLIENT DOC. NO.		JOB NO.		SCALE 1/3	
						DWG NO. SGT-2412-01-HPU					