

Automation, Hydraulic, Lubrication, Control  
System Manufacturer

A Company Specializing In The Localization Of Factory  
Automation Equipment, Steel Manufacturing Equipment  
And Power Generation Equipment

# SGHITEC



**SG** **SGHITEC CO., LTD.**  
에스지하이텍(주)






Automation, Hydraulic, Lubrication, Control  
System Manufacturer

A Company Specializing In The Localization Of Factory  
Automation Equipment, Steel Manufacturing Equipment  
And Power Generation Equipment

## ***SGHITEC CO., LTD.***

SGHITEC, a company that provides total solutions for industrial hydraulic and pneumatic products centered on customers' industrial sites, from the customer's point of view, 'like customers as family', will be with you.





**SGHITEC CO., LTD.**  
에스지하이텍(주)

**FOUNDING DATE** March 1988

**HEAD OFFICE** 19, Namsan 4-gil, Gwangyang-si, Jeollanam-do  
TEL +10-61-791-4475 FAX +10-61-792-4024

**POHANG OFFICE** TEL 054)283-4475

**MAJOR BUSSINESS**

A company specializing in the localization of factory automation equipment, iron making equipment, and power generation equipment

**MAIN PRODUCTS**

Hydraulic Pump, Valve, Solenoid Valve, Motor, Actuator, Fitting, Magnetic Filter  
Pneumatic Control Valve, On-off Valve, Actuator, Positioner

**MAJOR CUSTOMERS**

N2B, POSCO (Pohang, Gwangyang), POSCO ICT, POSCO Plantec,  
Hyundai Steel (Dangjin, Incheon, Suncheon), Seah Changwon Special Steel, etc.

**AGENCY**



# About Us

SGHITEC CO., LTD. started as Seoul Machinery Corporation in 1988 and is a specialized supplier of hydraulic, lubricating and control related maintenance parts. Based on the information related to steel facilities and power generation facilities. We supply pneumatic valves, pumps, fittings, actuators, motors, magnetic filters, etc.

In our company, U. In addition to supplying pneumatic products, we are striving to improve customer satisfaction and productivity by sharing information with customers through various experiences and technologies through production, inspection, installation, test operation, training, and maintenance. Gwangyang, Pohang), Hyundai Steel (Incheon, Dangjin, Suncheon), N2B (MRO material supplier), Seah Changwon Special Steel, Mirae NTS, etc. were selected as EHP (Entob Honored Partners) for many years. The company promises not only to do its best for customer satisfaction in product quality, delivery time, price, etc., but also to strive for ESG management activities such as environment, safety, social contribution activities, and fair trade practices.

**1988.03**

Established Seoul Machinery Corporation  
(Currently: SG Hitech Co., Ltd.)

**2019.01**

Choong-dal Choi inaugurated as CEO of SG Hitech Co., Ltd.

**2019.02**

Selected as an excellent supplier for  
N2B (MRO material supplier other than POSCO)

**2019.03**

Converted to Seoul Machinery Corporation Founded  
SG HITEC CO., LTD.

**2020.02**

Selected as an excellent supplier  
of N2B MRO materials

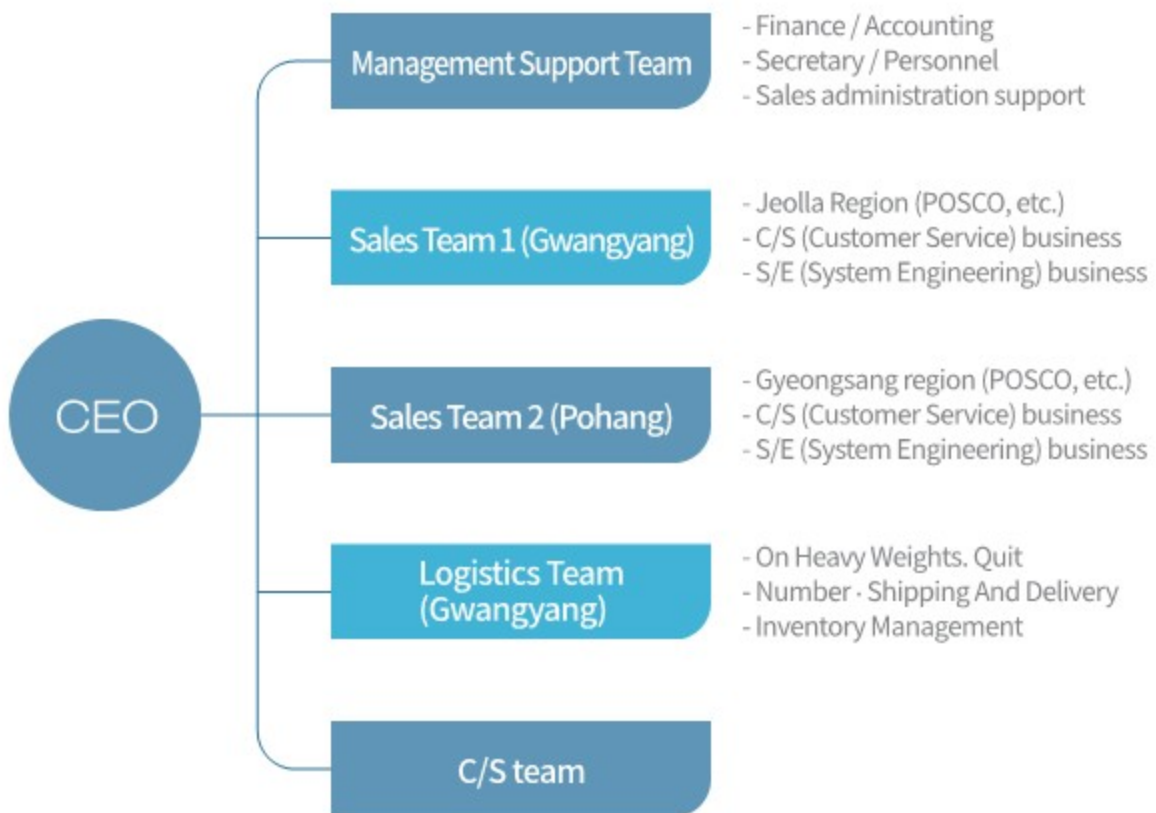
**2021.02**

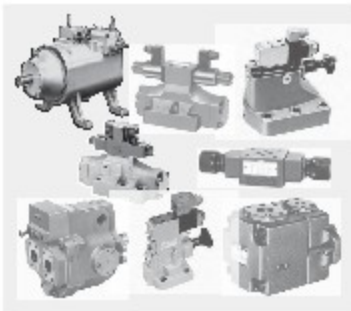
Selected as an excellent supplier of N2B MRO materials

**2022.03**

Selected as EHP (Entob Honored Partners)  
supplier (fittings, valves, hydraulic/pneumatic products)

# Organization chart





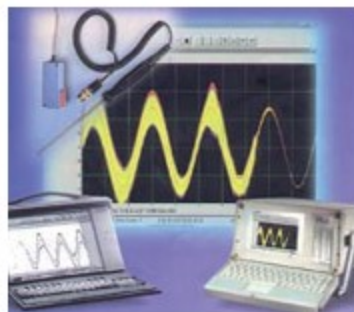
| Hydraulics |



| lubrication |



| Control Valve |



| Instrumentation |



| Pneumatic |

Selection and supply of maintenance parts and units for hydraulic, pneumatic, lubrication, control and measurement suitable for customer requirements.

# Hydraulic Parts

ITEM	MAKER
Pump & Motor	KAWASAKI
Solenoid & Logic Valve	YUKEN
Servo & Proportional Valve	Hirose Valves
High Torque Actuator	CAMEL
Filtration	NAKAMURA
Cooler & Bladder	TAISEI
Accumulator	MASUDA
Accessories	INTERNORMEN
Servo Motor & Drive	PARKER
	DAWON
	DENISON
	DAIKIN
	TOKIMEC
	MOOG
	CASAPPA
	NOP
	VICKERS-EATON



## Hydraulic Parts

# KAWASAKI



### AGENCY



- Headquarters: Changwon
- Factory: Haman, Uiryeong 1, Uiryeong 2

### CUSTOMER

POSCO (Gwangyang, Pohang), Seah Changwon Special Steel, Hyundai Steel ETC

### KEY DELIVERY PERFORMANCE

- POSCO Hot Rolling, Cold Rolling, Steel Making, Casting Plant  
MAIN Hydraulic Equipment (LZ Series)
- POSCO Cold Rolling Mill SPM Hydraulic Equipment (K3VG Series)
- OTHER HYD PUMP / VALVE / SOLENOID

### SOLUTION

- With various model configurations and production, it is easy to select products suitable for the user's field equipment conditions and the selection is wide.
- Suitable for systems that require strong power, precise control, and high reliability.
- We also produce pilot valves, electromagnetic proportional valves, general-purpose valves and special products that control various functions.





Flow Control Valve (FJC30)



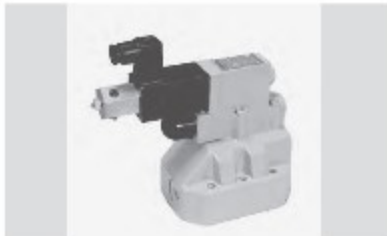
Logic Valve (KLD16~100)



Logic Valve Cover (LU16~100)



Counter Balance Valve (KDZ15~63)



Reducing Valve (PRB10,20,30)



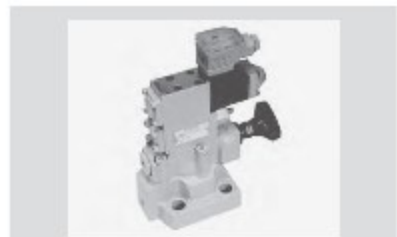
Reducing Valve (PRD6,10)



Proportional Reducing Valve (PRBP10,20,30)



Unload Relief Valve (PU10,20,30)



Relief Valve (RB10,20,30)



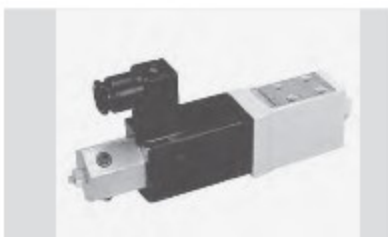
Relief Valve (RB35)



Relief Valve (RBE10,20,30)



Relief Valve (RD6~30)



Proportional Relief Valve (RDPV5)



Sequence Valve (SB10,20,30)(KDZ15~63)



Sequence Valve (SD6,10)



Sandwich Check Valve (S-(2)C6,10)



Sandwich Check Valve (S-(2)CH6-22)



Sandwich Relief Valve (S-(2)RB6,10)



Sandwich Orifice Valve (S-(2)T6,10)



Sandwich Throttle Check Valve (S-(2)TC6-22)



Sandwich Reducing Valve (S-PRD6,10)



Throttle Orifice Valve (T1M6-30)



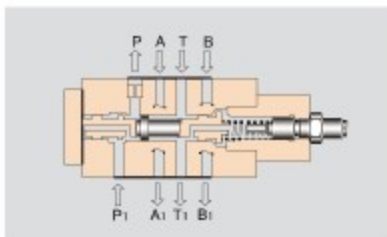
Orifice Valve (T1M52-102)



Orifice Valve (T6-30)



Throttle Check Valve (TC1M52-102)



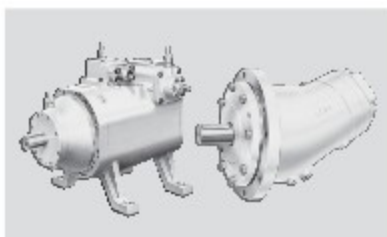
Sandwich Non-Shock Valve (ZNS5,6,10)



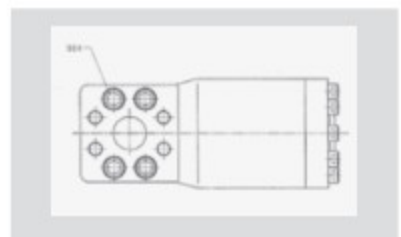
Hydraulic Piston Pump (K3VG Series)



Hydraulic Piston Pump (K3VL Series)



Hydraulic Piston Pump  
 (LZLZV\_LXLXV Series)



RESONATOR,[2903831834/KAWASAKI],  
 75kW,FOR K3VG280,K3VG180



LZV-260P110R1FD-AR1200-R-S-T62



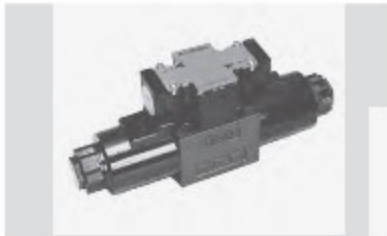
LZ-260P110R1FD-AR1220-RHS



Solenoid Pilot Directional Valve (DEH16P-90-304)



Solenoid Pilot Directional Valve (DEH16P-90-3138)



Solenoid Valve (DE6P)



Manually Operated Directional Valve (DM6P)



Solenoid Valve DE10P



Solenoid Pilot Directional Valve (DEH16,DEH22)



Relief Valve RD



Manually Operated Directional Valve  
(DM16P22P,32P)



Check Valve C Series



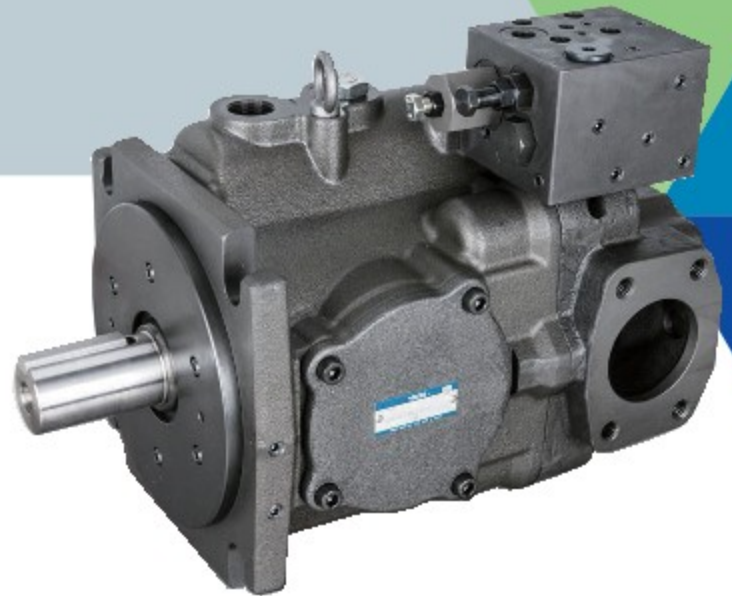
Relief Valve Balance Piston RB



Pilot Check Valve CH

Hydraulic Parts

# YUKEN



## AGENCY

**YUKEN**  
한국유켄공업(주)

- Headquarters: Seoul
- Factory: Busan 1, Busan 2

## CUSTOMER

POSCO (Gwangyang, Pohang), Seah Changwon Special Steel, Hyundai Steel ETC

## KEY DELIVERY PERFORMANCE

- POSCO 4th Hot Rolling Mill MAIN Hydraulic PUMP (A7H Series)
- Hydraulic unit facilities such as POSCO hot and cold rolling mills
- OTHER HYD PUMP / VALVE / SOLENOID, SERVO VALVE, AMPLIFIER

## SOLUTION

- Resolving the design, weaving, testing, and commissioning of equipment and systems that customers want based on rich track record
- Easy to manage automation facilities by supplying various products considering a wide range of pressure and flow
- In the event of an unexpected situation due to a breakdown of on-site equipment, general-purpose pumps or valves can be resolved and technically supported as stocked items
- Multiple items in stock





BG Pilot Direct Acting Relief Valve  
 Subplate Mounting Type



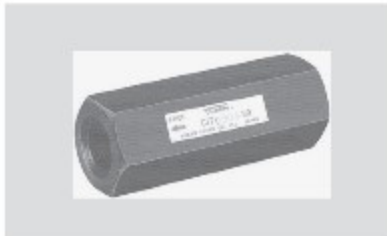
AME-D-10 E series  
 DC input type power amplifier for 10Ω



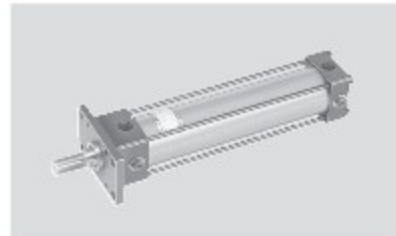
KIRIKO\_Briquette press  
 Automatic Chip Compressor



Relief valve with BSG solenoid valve  
 Relief valve with BST solenoid valve



CIT Inline Check Valve



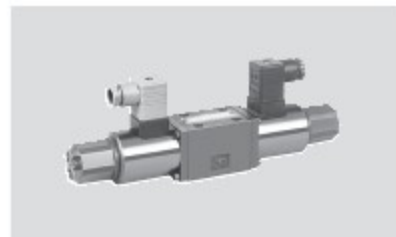
Standard hydraulic cylinder for CJT35 3.5Mpa



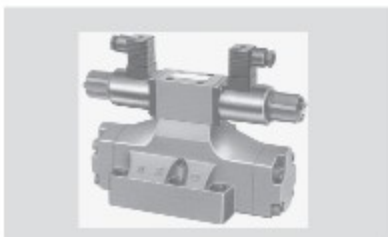
CPG,CPDG Pilot Operated Check Valve  
 Subplate Mounting Type



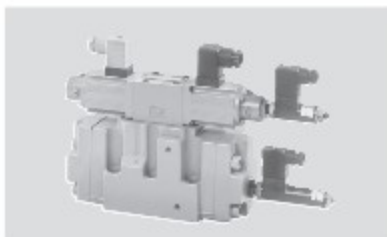
CRG Right Angle Check Valve  
 Subplate Mounting Type



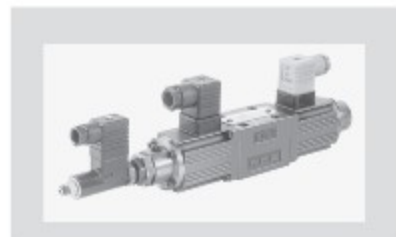
EDFG Shockless Proportional Electronic  
 Directional/Flow Control Valve



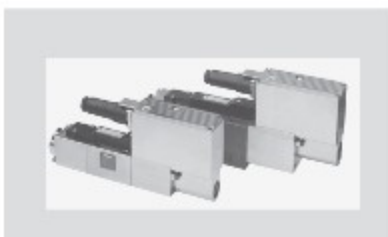
EDFHG Proportional Solenoid Directional  
 Flow Control Valve



ELDFG high-response proportional  
 electromagnetic directional flow control valve



ELDFHG 2-stage proportional electromagnetic  
 directional flow control valve



ELDFHG EH Series Direct Acting High Response  
 Proportional Solenoid Directional Flow Control Valve



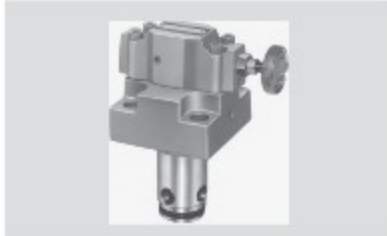
FG flow control valve/check valve  
 Built-in flow control valve



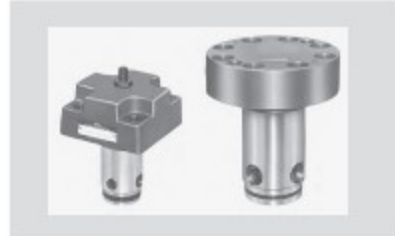
FHG Pilot Operated Flow Control Valve,  
 Pilot Operated Check Valve Built-in Flow  
 Control Valve



GCT InLine Type Needle Valve



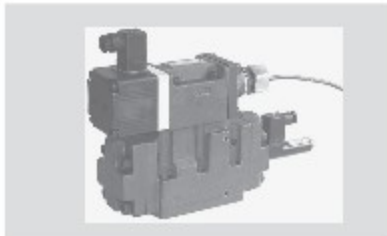
LB Relief Logic Valve



LD Directional/Directional Flow Logic Valves



LSVG-03 Direct Acting High Speed Linear Servo Valve



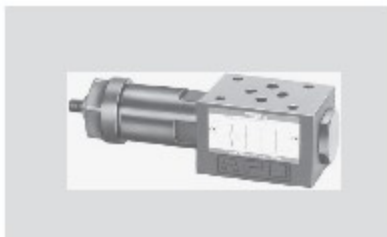
LSVHG 2단형 고속 리니어 서보 밸브



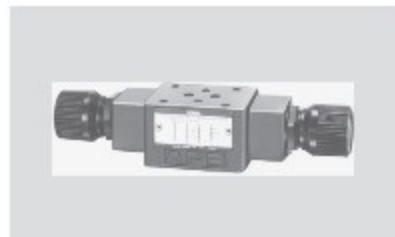
Relief modular valve for MBA-01 A line  
 Relief modular valve for MBB-01 B line



Bolt kit for MBK-005 modular valve



Counterbalance Modular Valve for MHA-01 A Line



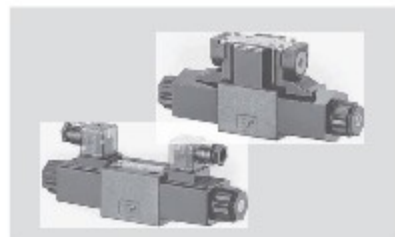
MSA-01 A 라인용 트로틀 체크 모듈러 밸브



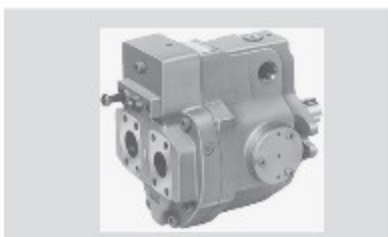
PMR2 Motor Driven Power Package



TC1G - TC2G Trot Module



DSG-01 Series (TW)



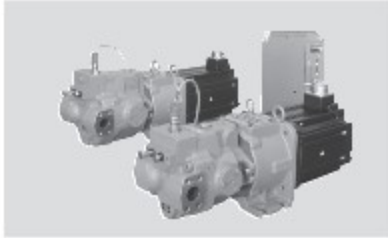
A-Series Variable Piston Pumps



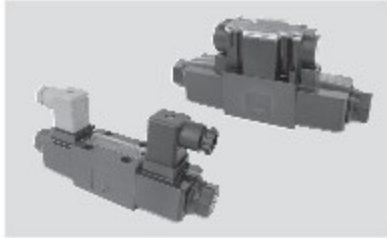
A3H series high pressure variable piston pump



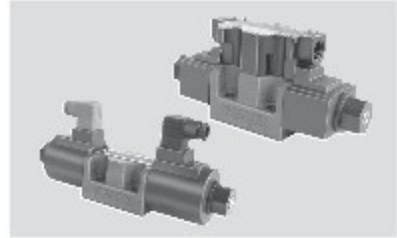
AR Series Variable Piston Pump



TC1G-TC2G Trot Module



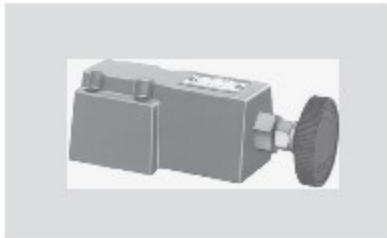
DSG-01 Series 솔레노이드



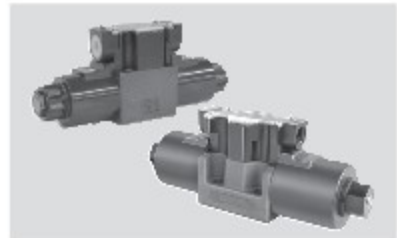
DSG-03 Series Solenoid Valve



DSHG Electronic Pilot Changeover Valve



DT Direct Acting Relief Valve



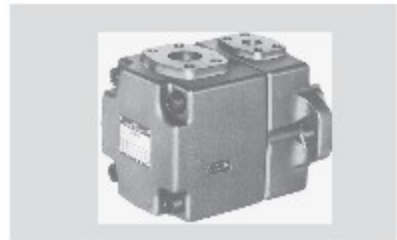
E-DSG Low Power (5W) Solenoid Valve



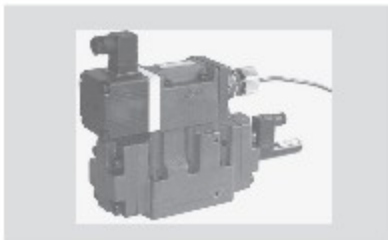
FC OR FCG flow control valve



PV2R type series double vane pump



LSVHG 2-stage high-speed linear servo valve



servo valve



single vane pump



power pack



Environmental devices



Hydraulic Application Contamination Meter



Hydraulic Parts  
**HIROSE**



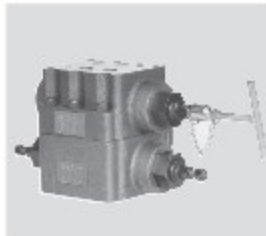
GASKET TYPE STOP VALVE  
 HG Series



FLANGE TYPE STOP VALVE  
 HF Series



FLANGE TYPE STOP VALVE  
 HF Series



Maintenance valve  
 JMV-RMV Series

Hydraulic Parts  
**DAKIN**



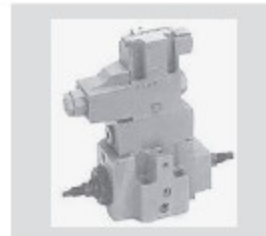
Solenoid Valve KSO  
 Solenoid Valve LS



PISTON PUMP V Series



PISTON PUMP VZ Series



Solenoid Pilot Operated Directional  
 Control Valve C2S

Hydraulic Parts  
**KAWAGUCHI**



KAWAGUCHI MOTOR ERC-20-1V-270

Hydraulic Parts  
**DAWON**



Cooler OIL CHILLER

# Control Valves

ITEM	MAKER
Air Solenoid Valve	KOSO
Air Control Valve	AUTOVALVES
Globe Valve	JOKWANG I.L.I
Gate Valve	KEYSTONE
NUFLO(Valve + Actuator)	ThermOmegaTech
Ball Valve	CKD
Butterfly Valve	FISHER
Positioner	HAFNER
Control Valve	DAW VALVE
Pneumatic Actuator	LOHSE
Hydraulic Actuator	PRISMA
Electric Actuator	SOMAS

# KOSO

## AGENCY

### **KOSO** 한국 KOSO 주식회사

- Headquarters: Seoul
- Factory: Incheon, Masan

## CUSTOMER

POSCO (Gwangyang, Pohang), Seah Changwon Special Steel, Hyundai Steel ETC

## KEY DELIVERY PERFORMANCE

- About 2000 units supplied by POSCO from 2000 to 2022 (50A to 900A)
- Supplied multiple heating furnace projects to POSCO Hot Rolling Mill (25A ~ 1300A)
- Large quantity of Globe / Ball / Butterfly / Damper supply history

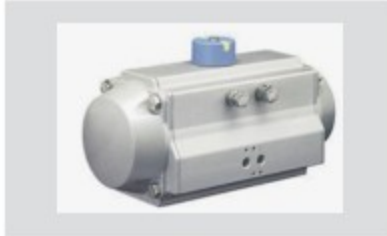
## SOLUTION

- Circular Position High Temperature / High Pressure Service 1% Position Operation Experience
- High Dp Valve Multiple high differential pressure valve supply history Resolved multiple BFW valve troubles (Cavitation, etc.)
- Price competitiveness and emergency delivery response Urgent delivery by Critical Line (less than 1.5 months)
  - ※ Urgent delivery including NDE Witness (1 month)
- Foreign valve localization technology review possible





DIAPHRAGM ACTUATOR 5200LA



PNEUMATIC CYLINDER ACTUATOR 6300RB



EP POSITIONER EP800



SEGMENTAL BALL VALVE 210E



PV2R type BUTTERFLY VALVE  
 HIGH PERFORMANCE 710E double vane pump



SEGMENTAL BALL VALVE 210C



BALL VALVE 332K



BUTTERFLY VALVE DAMPER 600S



MULTI-HOLE CAHE GLOBE VALVE 550G



GLOBE VALVE TOP GUIDED 501T



GLOBE VALVE CAGE 501G

Control Valves

# AUTOVALVE



## AGENCY



(주) 오토밸브(AUTOVALVE.CO.LTD)

- Headquarters: Seoul

## CUSTOMER

POSCO (Gwangyang, Pohang), Seah Changwon Special Steel,  
Hyundai Steel ETC

## KEY DELIVERY PERFORMANCE

- Supplied about 300 units of SeAH Changwon Special Steel 50A ~ 500A (BUTTERFLY, BALL)
- Supply of Teflon lined to Hyundai Steel (Suncheon) (BUTTERFLY)
- Possess a large amount of GLOBE / BALL / BUTTEFLY supply history

## SOLUTION

- Price competitiveness and urgent delivery response
- Localized replacement valve through technical review of foreign valve localization
- Guaranteed quality and performance of mul line and AIR line
- More than 5000EA in stock



Control Valves  
**AUTOVALVE**



RD&AD-F 2Way Flange  
 Double Acting Ball Valve



RS&AS-F 2Way Flange  
 Single Acting Ball Valve



RD-PVC 2Way PVC Double  
 Acting Ball Valve



RD-PVC-F 2Way PVC Double  
 Acting Flange Ball Valve



RD&AD-BF Double Acting  
 Wafer Butterfly Valve



RD&AD-HPBF Double Acting Double  
 Offset HP Butterfly Valve



RS&AS-BF Single Acting  
 Wafer Butterfly Valve



RS&AS-HPBF Single Acting Double  
 Offset HP Butterfly Valve

Control Valves  
**SOMAS**



KNIFE GATE LOHSE



BUTTERFLY VALVE



BUTTERFLY VALVE (LOW NOISE)

Control Valves

# JOKWANG I.L.I



Safety valve JSV-LT12



Safety valve JSV-HT41,42,43



Safety valve JSV-BF21,22,31



Safety valve JSV-FF11  
Safety valve JSV-FF21,22,23  
Safety valve JSV-FF31,32,41,51



Pressure reducing valve JRV-SF11,SF16  
Pressure reducing valve JRV-SF21



Primary pressure control valve JRV-FF12, FF21P



Steam trap JTR-DT22,DF21

Control Valves

# Therm Omega Tech



Freeze Prevention Valve



air condensate valve

Control Valves

## KEYSTONE Valve



BUTTERFLY VALVE FIG1&FIG2



BUTTERFLY VALE HS1



BUTTERFLY FIG 239&139&129



BUTTERFLY VALE FIG990

Control Valves

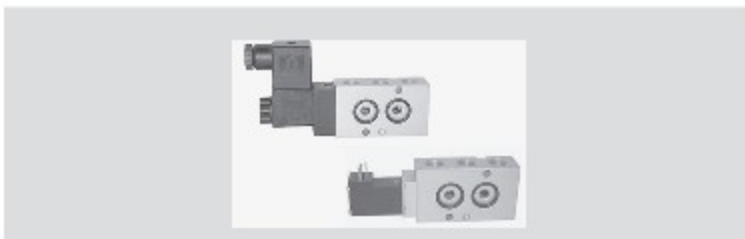
## LOHSE



KNIFE GATE LOHSE

Control Valves

## HAFNER



MNH 510 & MNH 511 SERIES HAFNER



MH 311 SERIES HAFNER

Control Valves

## ONLINE INSTRUMNET



Ultrasonic flow meter UFLOW 309K



Control Valves

## SGV(SMART GREEN VALVE)



SWING CHECK VALVE



GLOBE VALVE



GATE VALVE

Control Valves

## Accessories



HKC APL SERIES



I-TORK ITS LIMIT SWITCH SERIES



BUTTERFLY FIG 239&139&129

# FITTING

## MAKER

---

DAE KYUNG BEND  
DK-LOK  
SUNG WON FITTING  
FLANGES



Fitting

## DAE KYUNG BEND



90 ° ELBOW(LONG,SHORT) / 40 ° ELBOW(LONG)  
TEE(STRAIGHT, REDUCING / RECUCER(CONCENTRIC,ECCENTRIC)  
180 ° ELBOW(LONG) / CAP

Fitting

## DK-LOK



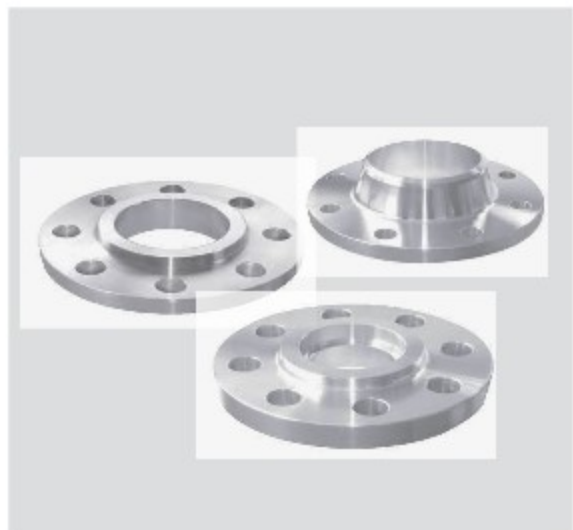
Fitting

## SUNG WON FITTING



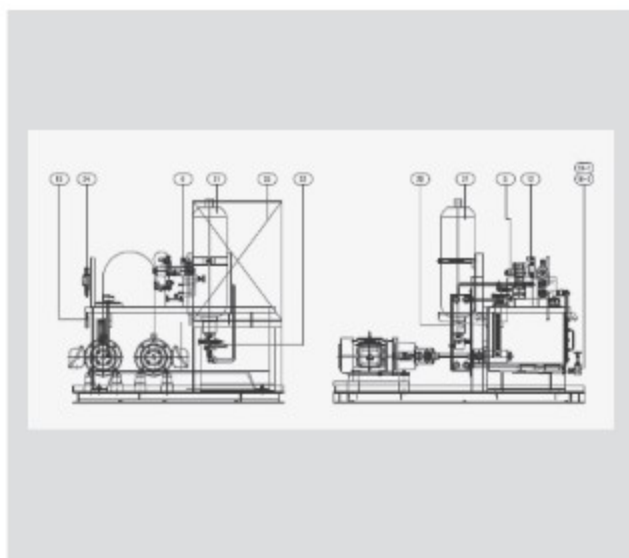
Fitting

## FLANGES



Class 150-300

# SPECIAL MODULE



SPECIAL MODULE  
**Hydraulic Unit**

SGPP-P50-220L

# SPM Controller CARD



Analog Card



CPU Card (SECO-CP2000)



Analog Input Card (SECO-AI2000)



Analog Output Card (SECO-AO2000)



SSI Card (SECO-SS2000)



SIO\_Card (SECO-SI2000)



Digital Input\_Output Card (SECO-IO2000)



Digital Output Card (SECO-DY2000)



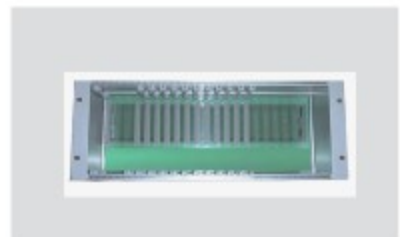
Solation Amolifier Power Card (SECO-ISOPWR)



Solation Amolifier Power Card (SECO-ISOPWR)



Isolation Amplifier Card (SECO-ISO2000)



SUB RACK (SECO-SVM2000)



Encoder Card (SECO-EN2000)



CPU Card (SECO-CP3000)



Analog Input Card (SECO-AI3000)

## Hydraulic Pump for Industrial Use



### Applied Area

#### Hydraulic press, iron making equipment, deck machinery for ships

It is a swash plate type axial piston pump developed from a piston pump for construction machinery to be suitable for industrial machinery.



### Applied Area

#### Deck machinery for special vehicles and ships

- With our proprietary technology, the pressure pulse, the cause of noise, has been greatly reduced.
- Load sensing and pressure constant type are the basic control methods, and unloading, pressure variable control, and horsepower control functions are additionally implemented.



### Applied Area

#### Steel making equipment, free forging press

- A bent axis type axial piston pump for industrial machinery with various control methods, high efficiency, and long service life.
- Equipped with abundant control methods such as constant torque type, constant pressure type, flow control, and electro-hydraulic flow control (ROTAS SERVO control).



### Applied Area

#### Thermal power plant, DEEP hole processing machine, fuel transfer equipment

- It is a screw pump with minimal noise, designed to allow hydraulic oil to flow smoothly in the axial direction to reduce sudden pressure changes.
- There is almost no pressure pulsation because the amount of hydraulic oil discharged is constant regardless of the rotational position of the shaft.
- The interlocking between the rotors is weak, so there is little wear and a long lifespan.

# Various Experiences And The Best Technology SGHITEC

## Radial Piston Type Staffa Motor



### Applied Area

Injection molding machine, civil construction machine, crusher, deck machine for ship, bending machine

- Large capacity per rotation and high torque at low speed.
- The simple structure makes handling and maintenance easy.
- A CHP valve that automatically changes the speed according to the load size can be added.

## Energy Saving Servo



### Applied Area

Press machines, injection molding machines, iron making machines, and other industrial machines

- By controlling the motor rotation speed of the pump, it is possible to precisely control the discharge amount.
- Delicate control of the actuator is possible, and energy saving and noise reduction are realized.

Fitting · Solenoid valve · Control valve · Actuator & Pump for plant

