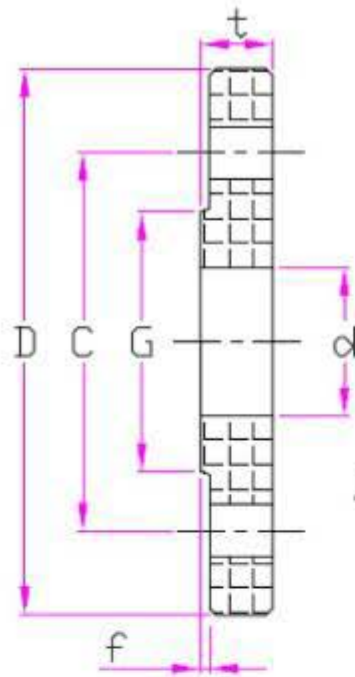
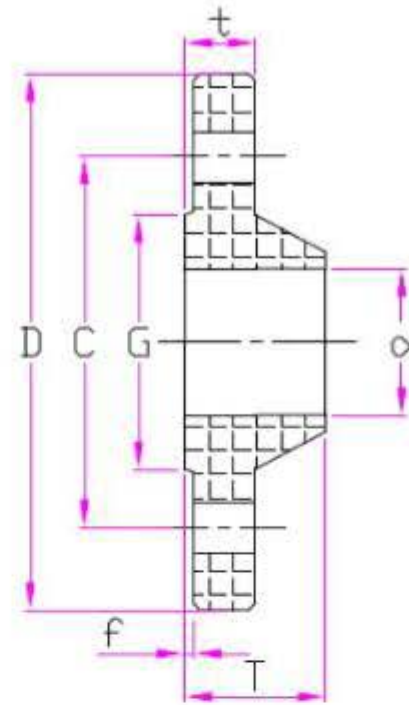


ASNI FLANGE (150 lbs)

원본보기



SLIP-ON type

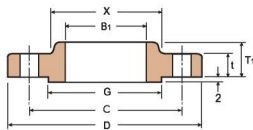


WELDING NECK type

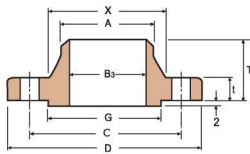
| Size (inch) | Size (mm) | D | t | G | T1 | T2 | B2 | C | No. of holes | Bolting Dia. of holes | Stud Bolt Size |
|-------------|-----------|-------|------|-------|-------|------|-------|-------|--------------|-----------------------|----------------|
| 1/2 | 15 | 88.9 | 11.2 | 35.1 | 47.8 | 15.7 | 22.4 | 60.4 | 4 | 16 | 1/2-13UNCx65L |
| 3/4 | 20 | 98.6 | 12.7 | 42.9 | 52.3 | 15.7 | 27.7 | 69.9 | 4 | 16 | 1/2-13UNCx65L |
| 1 | 25 | 108 | 14.2 | 50.8 | 55.6 | 17.5 | 34.5 | 79.2 | 4 | 16 | 1/2-13UNCx70L |
| 1 1/4 | 32 | 117.3 | 15.7 | 63.5 | 57.2 | 20.6 | 43.2 | 88.9 | 4 | 16 | 1/2-13UNCx70L |
| 1 1/2 | 40 | 127 | 17.5 | 73.2 | 62 | 22.4 | 49.5 | 98.5 | 4 | 16 | 1/2-13UNCx75L |
| 2 | 50 | 152.4 | 19.1 | 92 | 63.5 | 25.4 | 62 | 120.6 | 4 | 19 | 5/8-11UNCx85L |
| 2 1/2 | 65 | 177.8 | 22.4 | 104.6 | 69.9 | 28.4 | 74.7 | 139.7 | 4 | 19 | 5/8-11UNCx90L |
| 3 | 80 | 190.5 | 23.9 | 127 | 69.9 | 30.2 | 90.7 | 152.4 | 4 | 19 | 5/8-11UNCx95L |
| 3 1/2 | 90 | 215.9 | 23.9 | 139.7 | 71.4 | 31.8 | 103.4 | 177.8 | 8 | 19 | 5/8-11UNCx95L |
| 4 | 100 | 228.6 | 23.9 | 157.2 | 76.2 | 33.3 | 116.1 | 190.5 | 8 | 19 | 5/8-11UNCx95L |
| 5 | 125 | 254 | 23.9 | 185.7 | 88.9 | 36.6 | 143.8 | 215.9 | 8 | 22 | 3/4-10UNCx105L |
| 6 | 150 | 279.4 | 25.4 | 215.9 | 88.9 | 39.6 | 170.7 | 241.3 | 8 | 22 | 3/4-10UNCx105L |
| 8 | 200 | 342.9 | 28.5 | 269.7 | 101.6 | 44.5 | 221.5 | 298.4 | 8 | 22 | 3/4-10UNCx110L |
| 10 | 250 | 406.4 | 30.2 | 323.8 | 101.6 | 49.3 | 276.4 | 361.9 | 12 | 25 | 7/8-9UNCx120L |
| 12 | 300 | 482.6 | 31.8 | 381 | 114.3 | 55.6 | 327.2 | 431.8 | 12 | 25 | 7/8-9UNCx120L |
| 14 | 350 | 533.4 | 35.1 | 412.8 | 127 | 57.2 | 359.2 | 476.2 | 12 | 28 | 1-8UNCx135L |
| 16 | 400 | 596.9 | 36.6 | 469.9 | 127 | 63.5 | 410.5 | 539.7 | 16 | 28 | 1-8UNCx140L |
| 18 | 450 | 635 | 39.6 | 533.4 | 139.7 | 68.3 | 461.8 | 577.8 | 16 | 32 | 1 1/8-8UNx155L |
| 20 | 500 | 698.5 | 42.9 | 584.2 | 144.5 | 73.2 | 513.1 | 635 | 20 | 32 | 1 1/8-8UNx160L |
| 22 | 550 | 749.3 | 46 | 641.3 | 149.2 | 79.4 | 564.4 | 692.1 | 20 | 35 | 1 1/4-8UNx165L |
| 24 | 600 | 812.8 | 47.8 | 692.1 | 152.4 | 82.6 | 616 | 749.3 | 20 | 35 | 1 1/4-8UNx180L |
| 26 | 650 | 870 | 50.8 | 723.9 | 127 | 85.7 | 666.8 | 806.5 | 24 | 35 | 1 1/4-8UNx180L |
| 28 | 700 | 927.1 | 52.4 | 793.7 | 128.6 | 87.3 | 717.5 | 863.6 | 28 | 35 | 1 1/4-8UNx180L |
| 30 | 750 | 984.3 | 54 | 857.3 | 130.2 | 88.9 | 768.4 | 914.4 | 28 | 35 | 1 1/4-8UNx185L |

CLASS 150-300 FLANGES

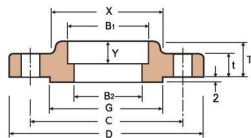
JPI 7S-15-84 & ANSI B 16.5



SLIP-ON



WELDING NECK

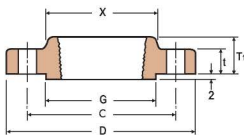


SOCKET WELDING

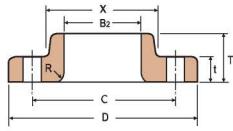
I Class 150

Unit : mm

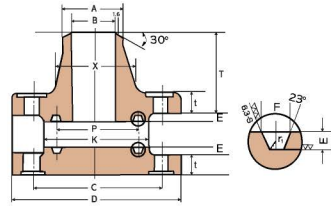
| Nominal Pipe Size | Outside Dia. of Flanges | Dia. of Bore | | | | | | | | | | Dia. of Hub at Bevel A | Dia. of Hub at Base | Raised Face | Thick of Flanges | Radius of Fillet | | |
|-------------------|-------------------------|--------------------|-------|--------------|-------|------------------------|-------|-------|--------|-----------------|-----------------|------------------------|---------------------|-------------|------------------|------------------|------|----|
| | | Slip-on Socket, B1 | | Lap-Joint B2 | | Welding-Neck, Socket B | | | | | | | | | | | | |
| | | JPI | ANSI | JPI | ANSI | JPI | | | ANSI | | | | | | | | | |
| A | B | D | JPI | ANSI | JPI | ANSI | SCH40 | SCH80 | SCH160 | SCH40 | SCH80 | SCH160 | JPI | ANSI | X | G | t | R |
| 15 | 1/2 | 90 | 22.2 | 22.40 | 23.4 | 22.90 | 16.1 | 14.3 | 12.3 | 15.8 | 13.9 | 11.8 | 21.7 | 21.30 | 30 | 34.90 | 9.6 | 3 |
| 20 | 3/4 | 100 | 27.7 | 27.70 | 28.9 | 28.20 | 21.4 | 19.4 | 16.2 | 20.9 | 18.8 | 15.6 | 27.2 | 26.70 | 38 | 42.90 | 11.2 | 3 |
| 25 | 1 | 110 | 34.5 | 34.60 | 35.6 | 35.10 | 27.2 | 25.0 | 21.2 | 26.6 | 24.3 | 20.7 | 34.0 | 33.50 | 49 | 50.80 | 12.7 | 3 |
| (32) | (11/4) | 115 | 43.2 | 43.20 | 44.3 | 43.70 | 35.5 | 32.9 | 29.9 | 35.1 | 32.5 | 29.5 | 42.7 | 42.20 | 59 | 63.50 | 14.3 | 5 |
| 40 | 1 1/2 | 125 | 49.1 | 49.60 | 50.4 | 50.00 | 41.2 | 38.4 | 34.4 | 40.9 | 38.1 | 34.0 | 48.6 | 48.30 | 65 | 73.00 | 15.9 | 6 |
| 50 | 2 | 150 | 61.1 | 62.00 | 62.7 | 62.50 | 52.7 | 49.5 | 43.1 | 52.5 | 49.3 | 42.9 | 60.5 | 60.50 | 79 | 92.10 | 17.5 | 8 |
| 65 | 2 1/2 | 180 | 77.1 | 74.70 | 78.7 | 75.50 | 65.9 | 62.3 | 57.3 | 62.7 | 59.0 | 54.0 | 76.3 | 73.20 | 90 | 104.80 | 20.7 | 8 |
| 80 | 3 | 190 | 90.0 | 90.70 | 91.6 | 91.40 | 78.1 | 73.9 | 66.9 | 77.9 | 73.7 | 66.7 | 89.1 | 88.90 | 108 | 127.00 | 22.3 | 10 |
| (90) | (3 1/2) | 215 | 102.6 | 103.40 | 104.1 | 104.20 | 90.2 | 85.4 | 76.2 | 90.1 | 85.5 | - | 101.6 | 101.60 | 122 | 139.70 | 22.3 | 10 |
| 100 | 4 | 230 | 115.4 | 116.10 | 116.9 | 116.90 | 102.3 | 97.1 | 87.3 | 102.3 | 97.2 | 87.3 | 114.3 | 114.30 | 135 | 157.20 | 22.3 | 11 |
| (125) | (5) | 255 | 141.2 | 143.80 | 143.0 | 144.60 | 126.6 | 120.8 | 108.0 | 128.2 | 122.3 | 109.6 | 139.8 | 141.20 | 164 | 185.70 | 22.3 | 11 |
| 150 | 6 | 280 | 166.0 | 170.70 | 168.4 | 171.50 | 151.0 | 143.2 | 128.8 | 154.1 | 146.3 | 131.8 | 165.2 | 168.40 | 192 | 215.90 | 23.9 | 13 |
| 200 | 8 | 345 | 218.0 | 221.50 | 219.5 | 222.30 | 199.9 | 190.9 | 170.3 | 202.7 | 193.7 | 173.1 | 216.3 | 219.20 | 246 | 269.90 | 27.0 | 13 |
| 250 | 10 | 405 | 269.5 | 276.40 | 271.7 | 277.40 | 248.8 | 237.2 | 210.2 | 254.6 | 247.7 | 215.9 | 267.4 | 273.10 | 305 | 323.80 | 28.6 | 13 |
| 300 | 12 | 485 | 321.0 | 327.20 | 322.8 | 328.20 | 297.9 | 283.7 | 251.9 | 304.8 | 298.5 | 257.2 | 318.5 | 323.90 | 365 | 381.00 | 30.2 | 13 |
| 350 | 14 | 535 | 358.1 | 359.20 | - | 360.20 | 333.4 | 317.6 | 284.2 | To be Specified | To be Specified | 284.2 | 355.6 | 355.60 | 400 | 412.80 | 33.4 | 13 |
| 400 | 16 | 595 | 409.0 | 410.50 | - | 411.30 | 381.0 | 363.6 | 325.4 | To be Specified | To be Specified | 325.5 | 406.4 | 406.40 | 457 | 469.90 | 35.0 | 13 |
| 450 | 18 | 635 | 460.0 | 461.80 | - | 462.40 | 428.6 | 409.6 | 366.8 | by purchaser | by purchaser | 366.7 | 457.2 | 457.20 | 505 | 533.40 | 38.1 | 13 |
| 500 | 20 | 700 | 511.0 | 513.10 | - | 514.40 | 477.8 | 455.6 | 408.0 | | | 408.0 | 508.0 | 508.00 | 559 | 584.20 | 41.3 | 13 |
| 600 | 24 | 815 | 613.0 | 616.00 | - | 616.00 | 574.6 | 547.8 | 490.6 | | | 490.6 | 609.6 | 609.60 | 663 | 692.20 | 46.1 | 13 |



THREADED



LAP JOINT



RING JOINT

I Class 150

Unit : mm

| Length thru Hub | | | Depth of Socket | Drilling | | | Dia. of Raised Face for Ring Joint | Pitch Dia. of Ring & Groove | Ring No. | RTJ Type | | | Approx. Weight(kg) | | | | Nominal Pipe Size | |
|-----------------------|-----------|--------------|-----------------|---------------------|----------------|-------------------|------------------------------------|-----------------------------|----------|-----------------|-----------------|------------------|--------------------|-------|-------|--------|-------------------|---------|
| Slip-on Socket Thread | Lap Joint | Welding Neck | | Dia. of Bolt Circle | Number of Bolt | Dia. of Bolt Hole | | | | Depth of Groove | Width of Groove | Radius of Groove | W.N | S.O | L.J | B.L | A | B |
| T1 | T2 | T | Y | C | N | h | K(min) | P | E | F | r1 | | | | | | | |
| 14 | 16 | 46 | 9,5 | 60,3 | 4 | 16 | — | — | — | — | — | 0,51 | 0,47 | 0,51 | 0,47 | 15 | 1/2 | |
| 14 | 16 | 51 | 11,1 | 69,9 | 4 | 16 | — | — | — | — | — | 0,73 | 0,58 | 0,64 | 0,63 | 20 | 3/4 | |
| 16 | 17 | 54 | 12,7 | 79,4 | 4 | 16 | 63,5 | 47,62 | R15 | 6,35 | 8,74 | 0,8 | 1,07 | 0,86 | 0,93 | 0,94 | 25 | 1 |
| 19 | 21 | 56 | 14,3 | 88,9 | 4 | 16 | 73,0 | 57,15 | R17 | 6,35 | 8,74 | 0,8 | 1,40 | 1,08 | 1,16 | 1,23 | (32) | (11/4) |
| 21 | 22 | 60 | 15,9 | 98,4 | 4 | 16 | 82,5 | 69,07 | R19 | 6,35 | 8,74 | 0,8 | 1,81 | 1,41 | 1,51 | 1,62 | 40 | 1 1/2 |
| 24 | 25 | 62 | 17,5 | 120,7 | 4 | 19 | 102 | 82,55 | R22 | 6,35 | 8,74 | 0,8 | 2,59 | 2,26 | 2,38 | 2,64 | 50 | 2 |
| 27 | 29 | 68 | 19,0 | 139,7 | 4 | 19 | 121 | 101,60 | R25 | 6,35 | 8,74 | 0,8 | 4,28 | 3,43 | 3,60 | 4,06 | 65 | 2 1/2 |
| 29 | 30 | 68 | 20,6 | 152,4 | 4 | 19 | 133 | 114,30 | R29 | 6,35 | 8,74 | 0,8 | 5,18 | 3,87 | 4,04 | 4,90 | 80 | 3 |
| 30 | 32 | 70 | 22,2 | 177,8 | 8 | 19 | 154 | 131,78 | R33 | 6,35 | 8,74 | 0,8 | 5,45 | 4,99 | 4,99 | 5,90 | (90) | (3 1/2) |
| 32 | 33 | 75 | 23,8 | 190,5 | 8 | 19 | 171 | 149,22 | R36 | 6,35 | 8,74 | 0,8 | 7,32 | 5,75 | 5,96 | 7,41 | 100 | 4 |
| 35 | 36 | 87 | 23,8 | 215,9 | 8 | 22 | 194 | 171,45 | R40 | 6,35 | 8,74 | 0,8 | 8,91 | 6,22 | 6,44 | 8,76 | (125) | (5) |
| 38 | 40 | 87 | 27,0 | 241,3 | 8 | 22 | 219 | 193,68 | R43 | 6,35 | 8,74 | 0,8 | 11,26 | 7,98 | 7,59 | 11,31 | 150 | 6 |
| 43 | 44 | 100 | 31,8 | 298,5 | 8 | 22 | 273 | 247,85 | R48 | 6,35 | 8,74 | 0,8 | 17,68 | 12,36 | 12,66 | 19,92 | 200 | 8 |
| 48 | 49 | 100 | 33,3 | 362,0 | 12 | 25 | 330 | 304,80 | R52 | 6,35 | 8,74 | 0,8 | 24,79 | 17,10 | 16,78 | 29,39 | 250 | 10 |
| 54 | 56 | 113 | 39,7 | 431,8 | 12 | 25 | 406 | 381,00 | R66 | 6,35 | 8,74 | 0,8 | 38,98 | 27,68 | 28,30 | 43,70 | 300 | 12 |
| 56 | 79 | 125 | 41,3 | 476,3 | 12 | 29 | 425 | 396,88 | R59 | 6,35 | 8,74 | 0,8 | 51,71 | 35,20 | 41,50 | 59,42 | 350 | 14 |
| 62 | 87 | 125 | 44,5 | 539,8 | 16 | 29 | 483 | 454,02 | R64 | 6,35 | 8,74 | 0,8 | 64,41 | 42,18 | 52,98 | 77,11 | 400 | 16 |
| 67 | 97 | 138 | 49,2 | 577,9 | 16 | 32 | 546 | 517,52 | R68 | 6,35 | 8,74 | 0,8 | 74,84 | 49,71 | 59,00 | 94,80 | 450 | 18 |
| 71 | 103 | 143 | 54,0 | 635,0 | 20 | 32 | 597 | 558,60 | R72 | 6,35 | 8,74 | 0,8 | 88,96 | 65,50 | 72,12 | 123,38 | 500 | 20 |
| 81 | 111 | 151 | 63,5 | 749,3 | 20 | 35 | 711 | 673,10 | R76 | 6,35 | 8,74 | 0,8 | 119,66 | 90,50 | 99,02 | 188,24 | 600 | 24 |