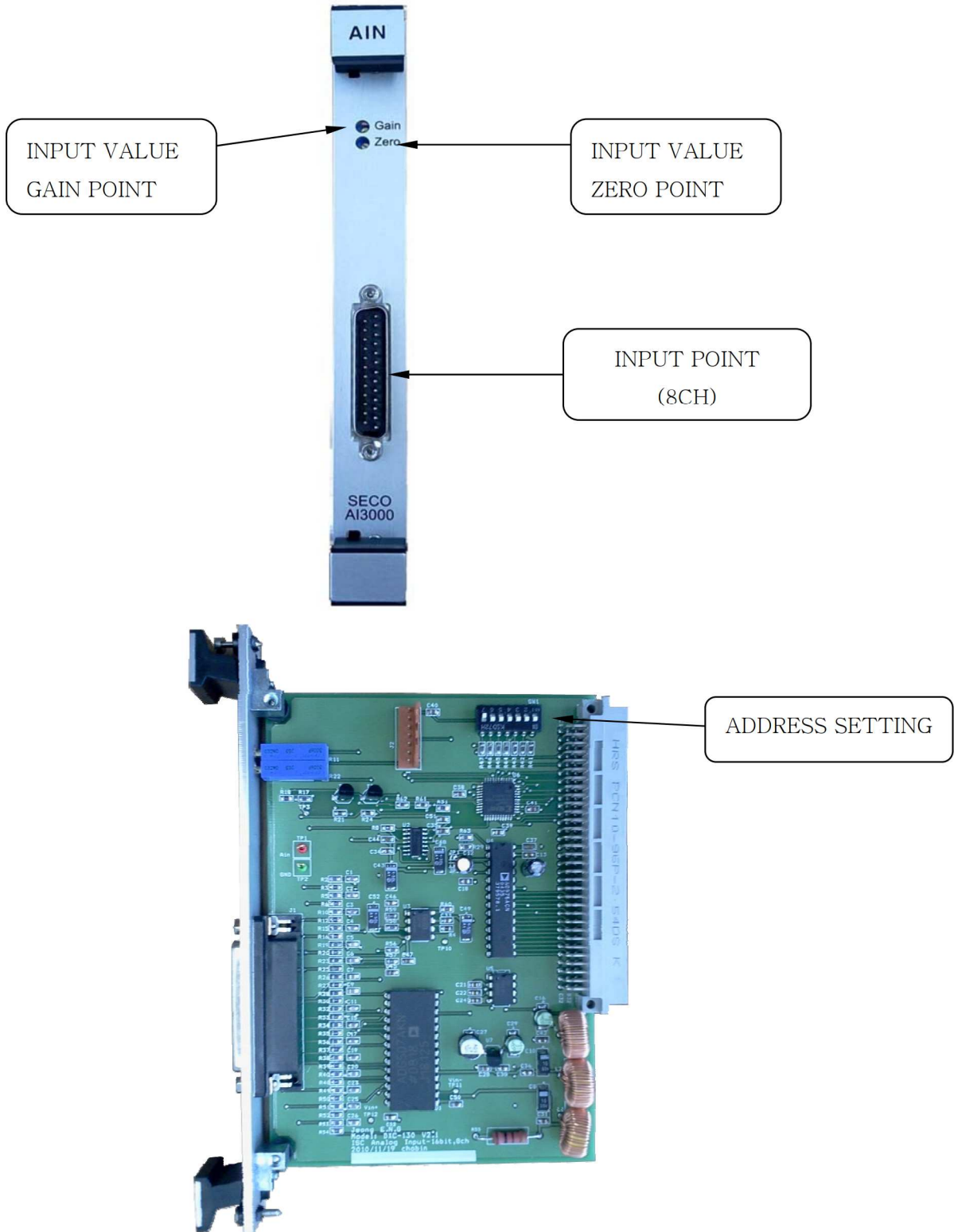


AIN CARD(SECO-AI3000)

SECO 2000Series

Model No. : SECO AI3000

I. UNIT DESCRIPTION



AIN CARD(SECO-AI3000)

SECO 2000Series

II. Specifications

Model: SECO AI3000

Resolution: 16bits

Maximum Sampling Speed: 100Khz

8 Channels

Zero, Span volume

Input Range: $\pm 10V$

III. CONNECTION

Connector: D-SUB, 25pins, Male, Right Angle

| Channel No. | Pin No. | Description |
|-------------|---------|------------------------|
| CH1 | 1 | Analog Input Channel 1 |
| | 2 | GND |
| CH2 | 3 | Analog Input Channel 2 |
| | 4 | GND |
| CH3 | 5 | Analog Input Channel 3 |
| | 6 | GND |
| CH4 | 7 | Analog Input Channel 4 |
| | 8 | GND |
| CH5 | 9 | Analog Input Channel 5 |
| | 10 | GND |
| CH6 | 11 | Analog Input Channel 6 |
| | 12 | GND |
| CH7 | 13 | Analog Input Channel 7 |
| | 14 | GND |
| CH8 | 15 | Analog Input Channel 8 |
| | 16 | GND |

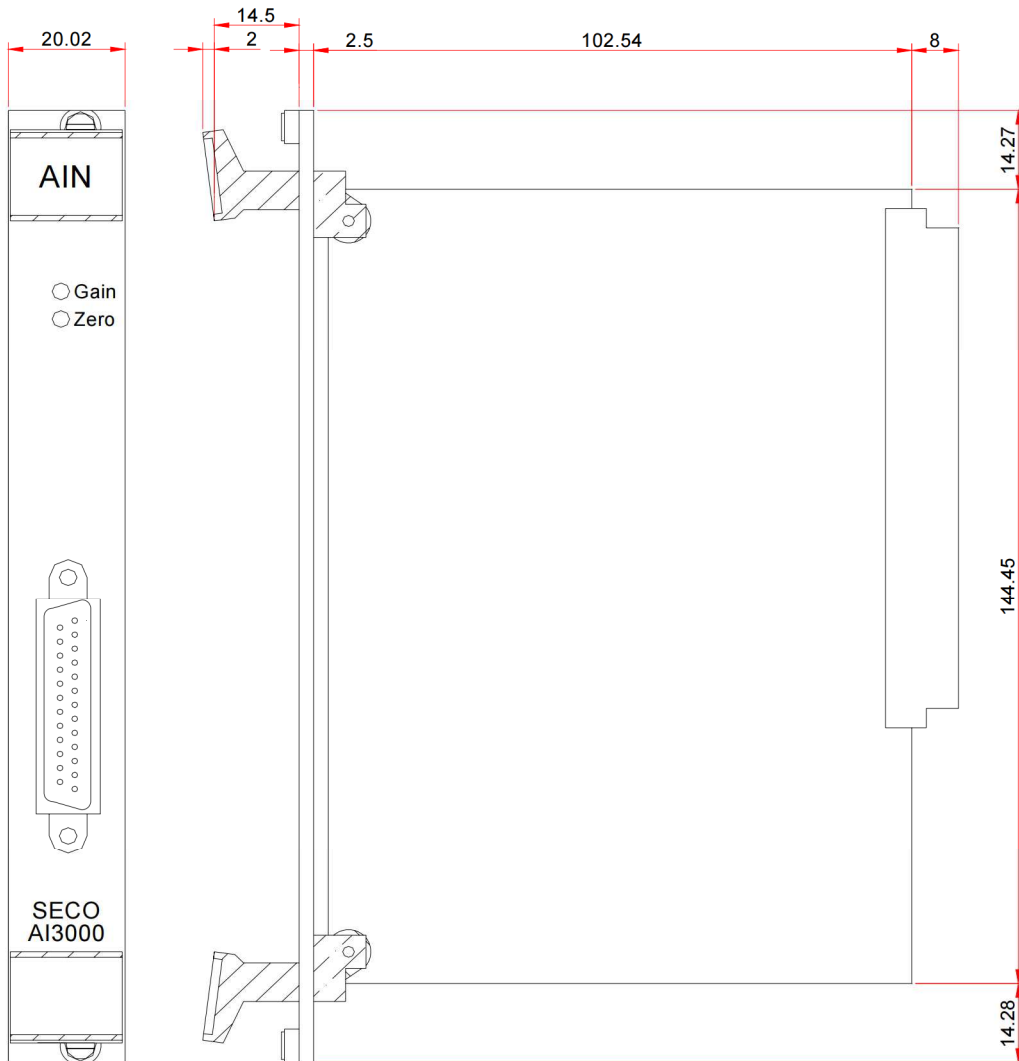
Span Use in input voltage gain adjustment. (-20% ~ +20%)

Zero Use in input voltage zero adjustment.

AIN CARD(SECO-AI3000)

SECO 2000Series

IV. UNIT DIMENSION



AIN CARD(SECO-AI3000)

SECO 2000Series

V. Notes

| | |
|---------|--|
| SGHITEC | Address: 19, Namsan 4-gil, Gwangyang-si, Jeollanam-do, 57722, Korea |
| | Tel : (061)791-4475 Fax: (061)792-4024 |
| URL | http://www.sgtec.org |
| E-mail | sgtec@sgtec.org |